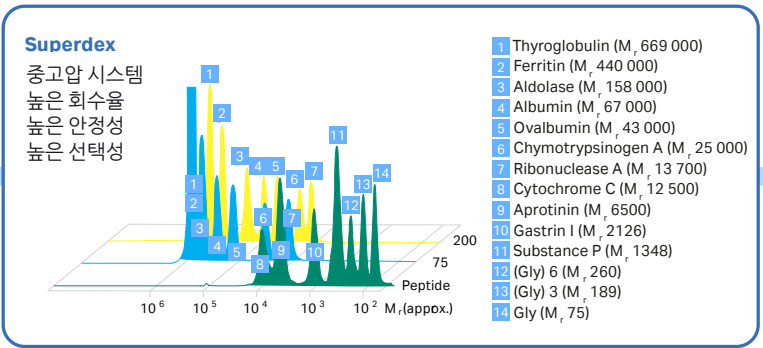


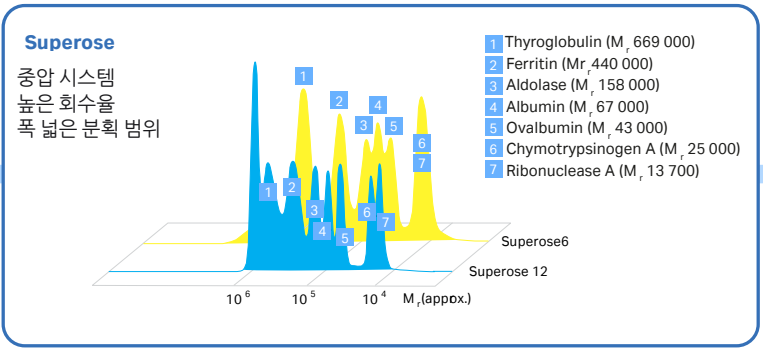
젤여과 크로마토그래피레진 선택가이드

정밀분획

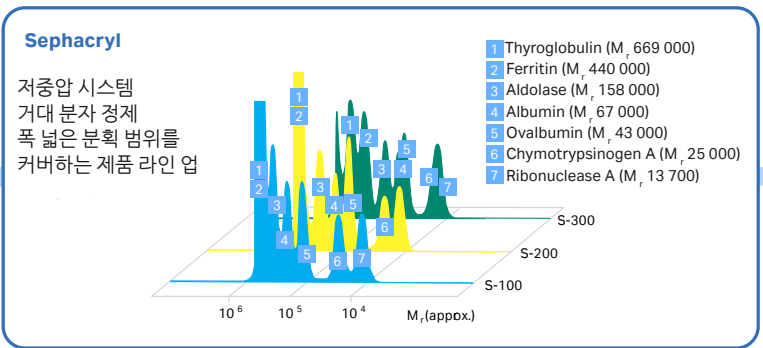
분취 or 분석
높은 선택성
(0.1~600 kDa)



분취 or 분석
폭 넓은 분획 범위
(1~5,000 kDa)



분취
거대 분자 정제
(1~5,000,000 kDa)



그룹분획

탈염 · 버퍼 교환

